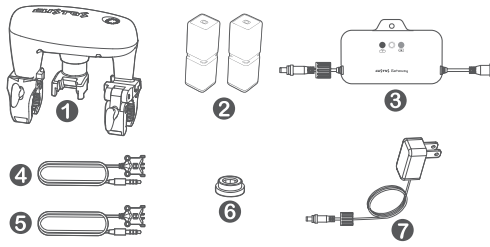


CUSTOS QUICK INSTALLATION GUIDE

PACKAGE CONTENTS

- 1 Ball Valve Servo (BVS)
- 2 Wireless Water Detector (WWD)
- 3 WiFi Control Gateway (WCG)
- 4 Water Detection Probe 31 inch
- 5 Water Detection Probe 55 inch
- 6 Spacer
- 7 Power Adapter



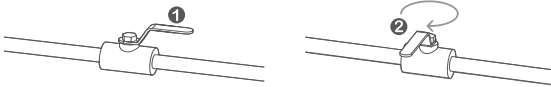
BEFORE YOU INSTALL

Install this actuator on ball valves only. At least 1.25" space between valve handle and pipe required. ALWAYS CLOSE THE VALVE FIRST!



Use with 1/2" - 1 1/4" ball valves only. Do NOT use on other types of valves.

1. CLOSE VALVE



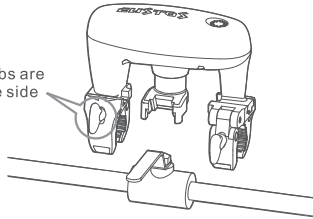
Rotate the handle from position 1 to position 2 to turn off your valve

2. PREPARE YOUR BVS

Position the BVS over the top of the handle of ball valve

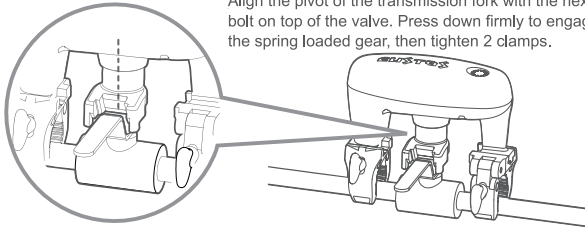


Make sure the knobs are facing on the same side

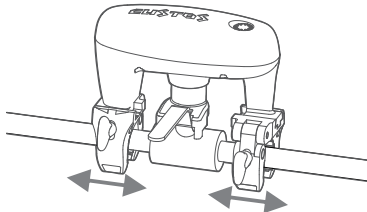


3. INSTALL BVS ON YOUR VALVE

Align the pivot of the transmission fork with the hex bolt on top of the valve. Press down firmly to engage the spring loaded gear, then tighten 2 clamps.

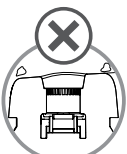


if you have oversized valve or your valve has adjacent pipe elbow, you may slide any or both clamps in or out to fit the space.



Check the transmission fork mechanic engagement by visual
You SHOULD NOT see the PATTERN on top of transmission fork, if you do, you may not install it securely, please double check, make sure you have pushed the BVS down enough for a secured installation.

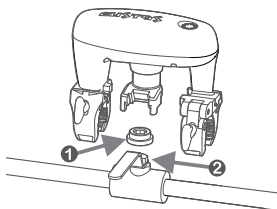
Otherwise you have a rare ultra low profile valve, the handle is too low for spring loaded mechanic to engage, in this case, please put the Spacer 1 between the hex bolt head of the valve 2 and the transmission fork.



PATTERN SEEN

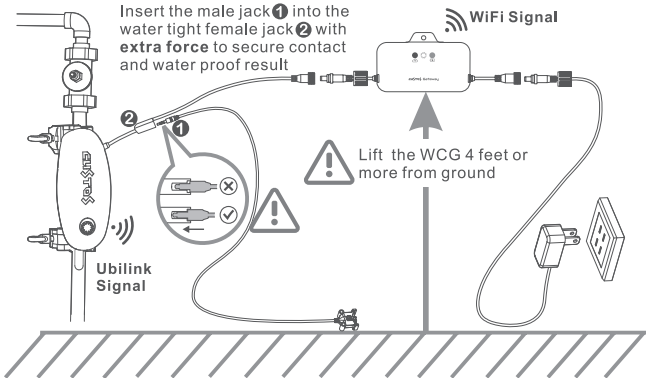


PATTERN NOT SEEN



ONLINE TUTORIAL
<https://custos.us/support>

4. CONNECT WCG AND POWER ADAPTER



Insert the male jack 1 into the water tight female jack 2 with extra force to secure contact and water proof result

WiFi Signal

Lift the WCG 4 feet or more from ground

Ubilink Signal

You may install local water detection probe (included) for close area leak detection, plug the male jack 1 to the female jack 2 from the power supply cable branch (please push hard enough to achieve water tight result), It will trigger the valve to close whenever water is detected. (remove the protection cap from female jack first)

5. INSTALL THE APP & FOLLOW APP INSTRUCTIONS

Scan QR code to install the mobile application



Android/iOS

Follow instructions in the App
1. Register USER ACCOUNT
2. Config Wi-Fi Connection
3. Register devices



How to activate Wireless Water Detectors:

- 1 In the Custos App, add device, scan the big QR code on the WWD
- 2 Activate WWD from hibernation by applying water to 2 of it's detection probe.



Put WWD on flat solid surface, drop water on it's side, let the water goes in to the groove underneath until water tripped 2 probes



For hard to reach area you can attached remote sensor probe to serve the purpose



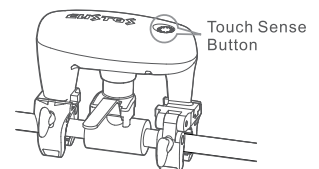
If you are installing the Ball Valve Servo **outdoor**, you may consider disabling the touch sense button to prevent activation from rain drops or pets.

To Disable the button:

Tap and hold the touch sense button for 3 beeps, then quickly tap 3 times in a row.
If successful, the Yellow LED will flash once, then the Red LED with 1 beep. The LED will slowly flash Yellow indicating the touch sense button has been locked.

To Re-Enable the button:

Do the same action again.
If successful, the Yellow LED will flash once, then the Red LED with 3 beeps. LED will then slowly flash Green indicating the touch sense button has been unlocked.



Touch Sense Button